

Beaconsim is the global leader in simulator systems for critical communications such as TETRA, LTE, P25, DMR and dPMR.

Beaconsim simulators are used for several purposes:

- **Training** of radio users, dispatchers, ERC operators and/or field command
- **Planning and definition** of fleet maps and other radio and system parameters
- **Planning and testing** of communication plans and SOP's
- **Testing** of end-to-end functionality of C&C, dispatching, field command and data applications and their integration to API and PEI interfaces.

Beaconsim ONE is a self-learning system for radio users with interactive radio simulators and it enables fast training of large organizations. Learning targets can be defined and results measured. Text, pictures, video and audio are accompanied by simulator demos and exercises with which users learn at their own pace whenever they have time. Simulators can be adjusted to have the likeness of real radios, with the right talk groups, folders and other settings. Users receive feedback on their learning and get a certificate after they have reached the required level. If simulator tests are repeated for example annually they can be used as a prerequisite for a user license or for attending a simulator drill.

Beaconsim ONE is installed at a server and its courses are used from any PC, laptop or tablet and it does not require any special program installations – browser suffices.

Below some student views of Beaconsim ONE:

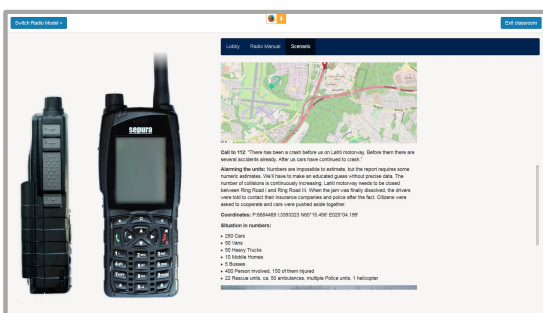


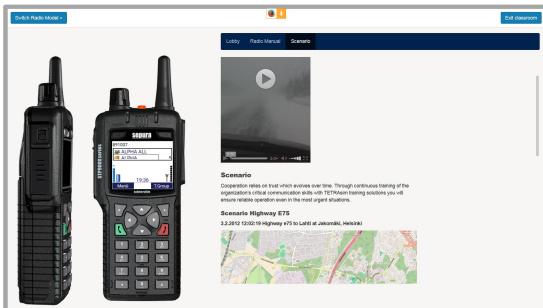
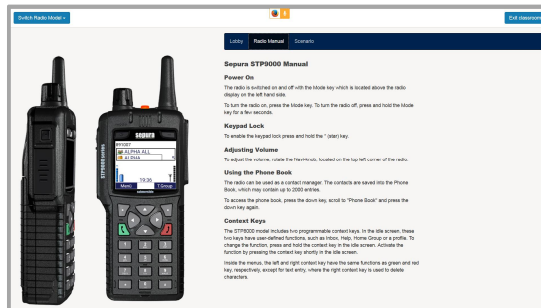
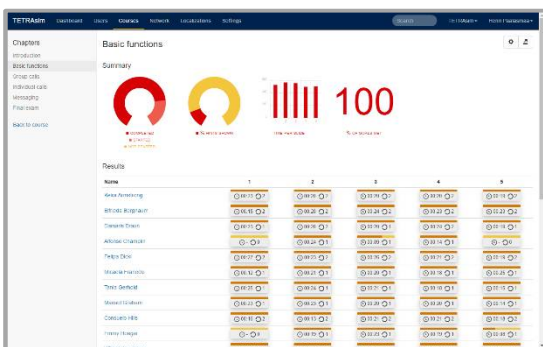
The screenshots show the following content:

- Slide 1:** "In this chapter you will learn" with a list of topics: How to power on the radio, Adjusting the volume, Navigating the main menu, What are talk groups and how to change them, What are folders and how to change them, and How to make group calls. Includes an image of a building on fire.
- Slide 2:** "Powering on the radio" with instructions: "Press and hold the Mode Key." and "The Mode Key is the black key on the left, upper corner of the radio above the display." Includes a note about key highlighting.
- Slide 3:** "Navigating the main menu" with instructions on using navigation keys (Up, Down, Left, Right) and context keys to navigate through the simulator's menu.
- Slide 4:** "Folders and groups" showing a radio screen with a selected folder and talkgroup, with text: "The selected talkgroup and folder are shown on the display in the idle mode."
- Slide 5:** "Group calls 1" with an exercise: "Change the talkgroup to ALPHA!" and a reminder: "... remember to lock the answer when ready".
- Slide 6:** "Quiz" with the question: "Which call type enables communication with more than one party?" and options: Group Call, Direct Call, and Direct Mode. Includes an image of emergency responders.

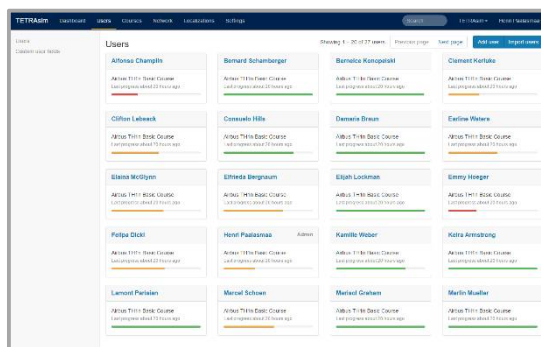
Beaconsim TEAM is a virtual classroom including a virtual radio network with its radio terminals, dispatchers, C&C, field command and data applications. Its simulated radio network has the real network's functionality, fleet maps, talk groups, folders and other parameters. Beaconsim TEAM ensures learning in an environment which is realistic without the risk of doing something wrong or using resources which are needed elsewhere.

Virtual classroom enables trainer-led training even remotely – without travelling. It features group exercises and scenarios with group dynamics which self-learning exercises lack. During exercises the trainer is in control and can follow each individual's progress: focus is on learning instead of training. Students' activities can be recorded: speech items, key pressings and their timings. These form an objective base for the de-briefing session after the scenario.

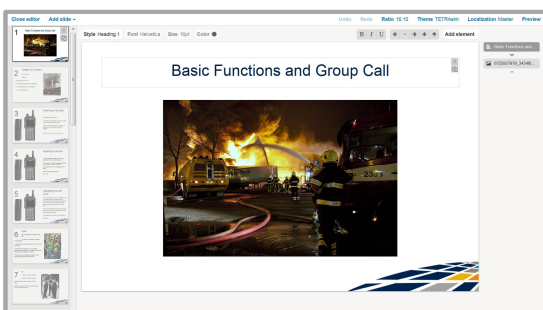


Results	1	2	3	4	5
Send Emergency	03:19:15	03:19:21	03:19:27	03:19:33	03:19:39
Send 112	03:19:15	03:19:21	03:19:27	03:19:33	03:19:39
Send 110	03:19:15	03:19:21	03:19:27	03:19:33	03:19:39
Send 119	03:19:15	03:19:21	03:19:27	03:19:33	03:19:39
Send 114	03:19:15	03:19:21	03:19:27	03:19:33	03:19:39
Send 115	03:19:15	03:19:21	03:19:27	03:19:33	03:19:39
Send 116	03:19:15	03:19:21	03:19:27	03:19:33	03:19:39
Send 117	03:19:15	03:19:21	03:19:27	03:19:33	03:19:39
Send 118	03:19:15	03:19:21	03:19:27	03:19:33	03:19:39
Send 119	03:19:15	03:19:21	03:19:27	03:19:33	03:19:39
Send 120	03:19:15	03:19:21	03:19:27	03:19:33	03:19:39
Send 121	03:19:15	03:19:21	03:19:27	03:19:33	03:19:39
Send 122	03:19:15	03:19:21	03:19:27	03:19:33	03:19:39
Send 123	03:19:15	03:19:21	03:19:27	03:19:33	03:19:39
Send 124	03:19:15	03:19:21	03:19:27	03:19:33	03:19:39
Send 125	03:19:15	03:19:21	03:19:27	03:19:33	03:19:39
Send 126	03:19:15	03:19:21	03:19:27	03:19:33	03:19:39
Send 127	03:19:15	03:19:21	03:19:27	03:19:33	03:19:39
Send 128	03:19:15	03:19:21	03:19:27	03:19:33	03:19:39
Send 129	03:19:15	03:19:21	03:19:27	03:19:33	03:19:39
Send 130	03:19:15	03:19:21	03:19:27	03:19:33	03:19:39



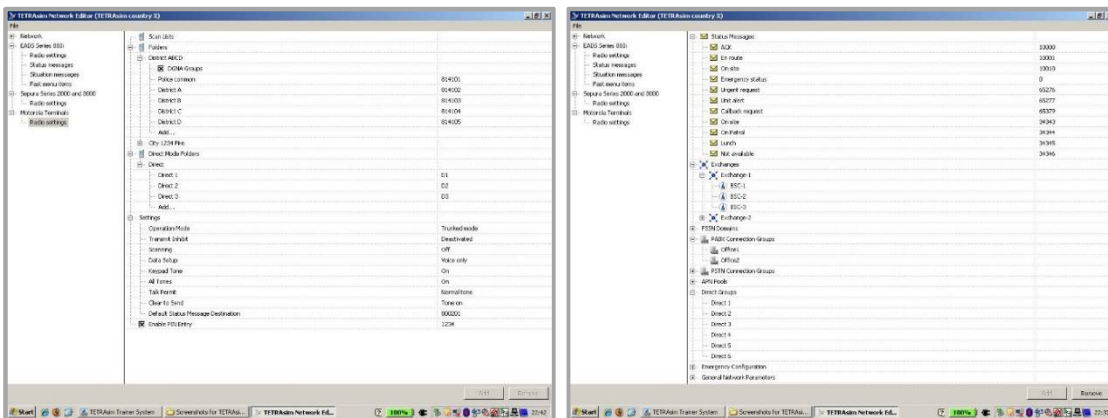
Users	Showing 1 - 25 of 27 users	Previous page	Next page	Out	In	Logout
Alfonso Changlin	AK104 1111: Basic Group	AK104 1112: Basic Group	Bernhard Schambarger	AK104 1113: Basic Group	Bernabe Konopkovi	AK104 1114: Basic Group
Ciflon Isaksson	AK104 1115: Basic Group	AK104 1116: Basic Group	Conrado Hills	AK104 1117: Basic Group	Dennis Eron	AK104 1118: Basic Group
Eliana McClym	AK104 1119: Basic Group	AK104 1120: Basic Group	Eliash Lockman	AK104 1121: Basic Group	Emmy Hoeger	AK104 1122: Basic Group
Felipe Cicki	AK104 1123: Basic Group	AK104 1124: Basic Group	Honi Paldamas	AK104 1125: Basic Group	Katrin Weber	AK104 1126: Basic Group
Lancelot Perkinis	AK104 1127: Basic Group	AK104 1128: Basic Group	Manuel Schwan	AK104 1129: Basic Group	Marcel Gruber	AK104 1130: Basic Group
	AK104 1131: Basic Group	AK104 1132: Basic Group		AK104 1133: Basic Group	AK104 1134: Basic Group	AK104 1135: Basic Group




Beaconsim TEAM is a perfect match for **XVR On Scene** Virtual Reality system. Together these two products form a full simulation for decision making, field command and communication training. Simulated drills are an effective and cost-effective way to rehearse standard operating procedures and ensure the best possible behavior in real situations.



Beaconsim PLAN is a virtual radio network which can be parameterized in several ways with various fleet maps, talk groups, folders and other radio and system parameters. It is disconnected from the real network and thus cannot disturb it in any way. It can be used for planning of parameters, testing the effects to radio users or dispatchers. It is possible to create several virtual networks which can be shown as a demo to user organizations and using them as a basis for decision making before making the final changes in the real network. Beaconsim PLAN's virtual network can be also used for planning of communication plans and SOP's and testing them. When using it as a tool in change processes it shortens acceptance at user organizations and also reduces expensive iterations in the real network.



Beaconsim LAB is a flexible virtual testbed for all applications, functions and services of the network. It is an alternative for manufacturers' testbeds especially at the beginning of the development and it reduces the time needed for development and testing and cost for travelling. The system has features which support development and testing work: multiple virtual network/radio settings, load testing, different API and PEI simulator versions for integration.



Beaconsim has delivered simulator systems to 28 countries in Europe, Middle East, Asia and Africa. Its solutions are available with any Sepura radio and interface simulator, in any language.



Did we spark your interest? You find more information and a demo at www.beaconsim.com

Contact us

sales@tetrasim.com

elina.avela@tetrasim.com +358 50 514 9705

henri.paalasmaa@tetrasim.com +358 40 752 4722

simo.ruoko@tetrasim.com +358 40 504 0759 or when in GCC +971 55 875 5435